

Industry Solutions: Internet Portals

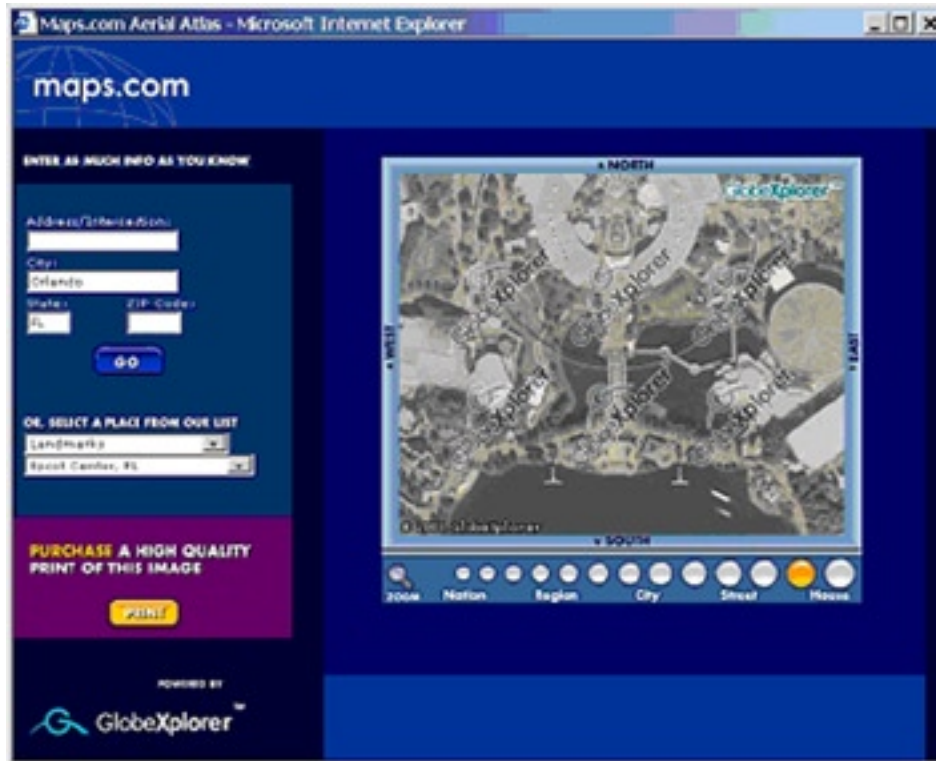
Maps.com uses GlobeXplorer's **ImageAtlas** product.

Maps.Com Goes Live With GlobeXplorer's Interactive Aerial Image Viewer

Leading Online Map Provider Adds Visual Perspective to Traditional Maps; Responds to Growing Demand for Satellite & Aerial Images

GlobeXplorer has partnered with maps.com to provide interactive aerial images to online consumers. Maps.com users who traditionally use the site to explore geography, get directions, or plan a trip can now enter a US address and instantly view an interactive aerial photo provided by GlobeXplorer. The aerial images delivered to the maps.com web site are part of GlobeXplorer's extensive satellite and aerial image library, covering all of the US and over 130 major metropolitan areas worldwide. Maps.com visitors can use the new service to view aerial photos of famous landmarks, travel destinations, sporting venues or their own property.

"Our customers are always looking for new views of the world and it's geography," said Chris Baker, President and CEO of Maps.com. "GlobeXplorer brings a whole new perspective to our users, adding value to the wide range of mapping products we already provide. We strive to bring our customers the best products and services and we know our users will enjoy the unique views provided by GlobeXplorer's targeted collection of aerial and satellite images.



Additionally, interactive aerial imagery supplied by GlobeXplorer provides a level of stickiness for our banner advertising efforts."

Maps.com is targeted to Internet consumers looking for driving directions and access to a wide variety of maps and geographic resources. Additionally, educators and students use the site to access maps and atlases to teach and study geography. With GlobeXplorer's imagery, students and teachers can now zoom-in on historic landmarks, survey mountains and rivers, and view the nation's geography and natural features.