

## Industry Solutions: Real Estate & Insurance

Grubb & Ellis uses GlobeXplorer's **ImageConnect**, and **ImageAtlas** products.

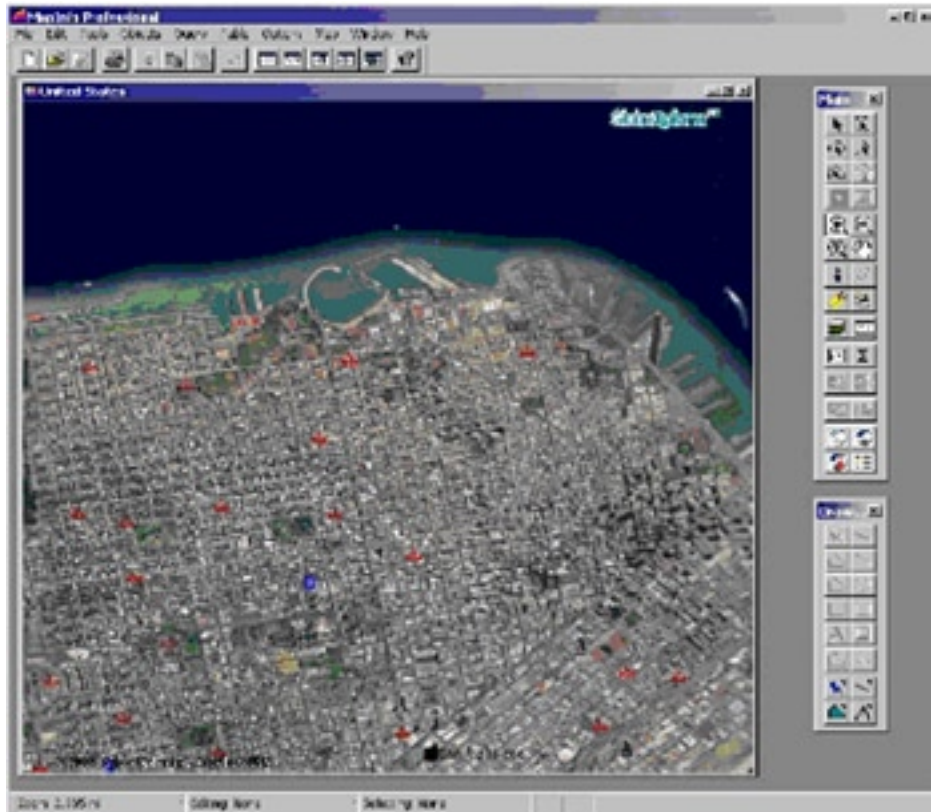
# GlobeXplorer Signs Deal With Grubb & Ellis Company To Deliver Online Aerial Images

## *Leading Commercial Real Estate Services Company Using Aerial Images to Showcase Properties, Assist in Research*

GlobeXplorer is delivering its aerial images to Grubb & Ellis Company (NYSE: GBE), global business advisors for commercial and corporate real estate issues. The two companies struck an agreement that enables Grubb & Ellis to access aerial images over the Internet using proprietary technology developed by GlobeXplorer.

“Aerial images in the real estate sector are a staple, and there is a great need for an end-to-end technology like GlobeXplorer to provide rapid delivery, high-quality content and complete coverage,” said Chris McDougall, National Director of Research Services at Grubb & Ellis. “GlobeXplorer’s impressive archive of high-resolution aerial images and the interactive nature of the content is a terrific asset in product delivery and customer service.”

“Having a real estate business advisor like Grubb & Ellis adopt our technology is a significant endorsement for GlobeXplorer and highlights our continued momentum,” said Rob Shanks, CEO of GlobeXplorer. “On-line and printable aerial imagery is a powerful tool in the real estate industry and



we’re pleased to have national organizations like Grubb & Ellis using our technology products for competitive advantage.”

Grubb & Ellis uses GlobeXplorer’s interactive aerial images to showcase properties to clients, supplement existing maps and information resources, conduct property research, and print images for use in presentations. The images are being delivered over the Internet to hundreds of transaction professionals, research and marketing professionals in Grubb & Ellis offices throughout the United States.